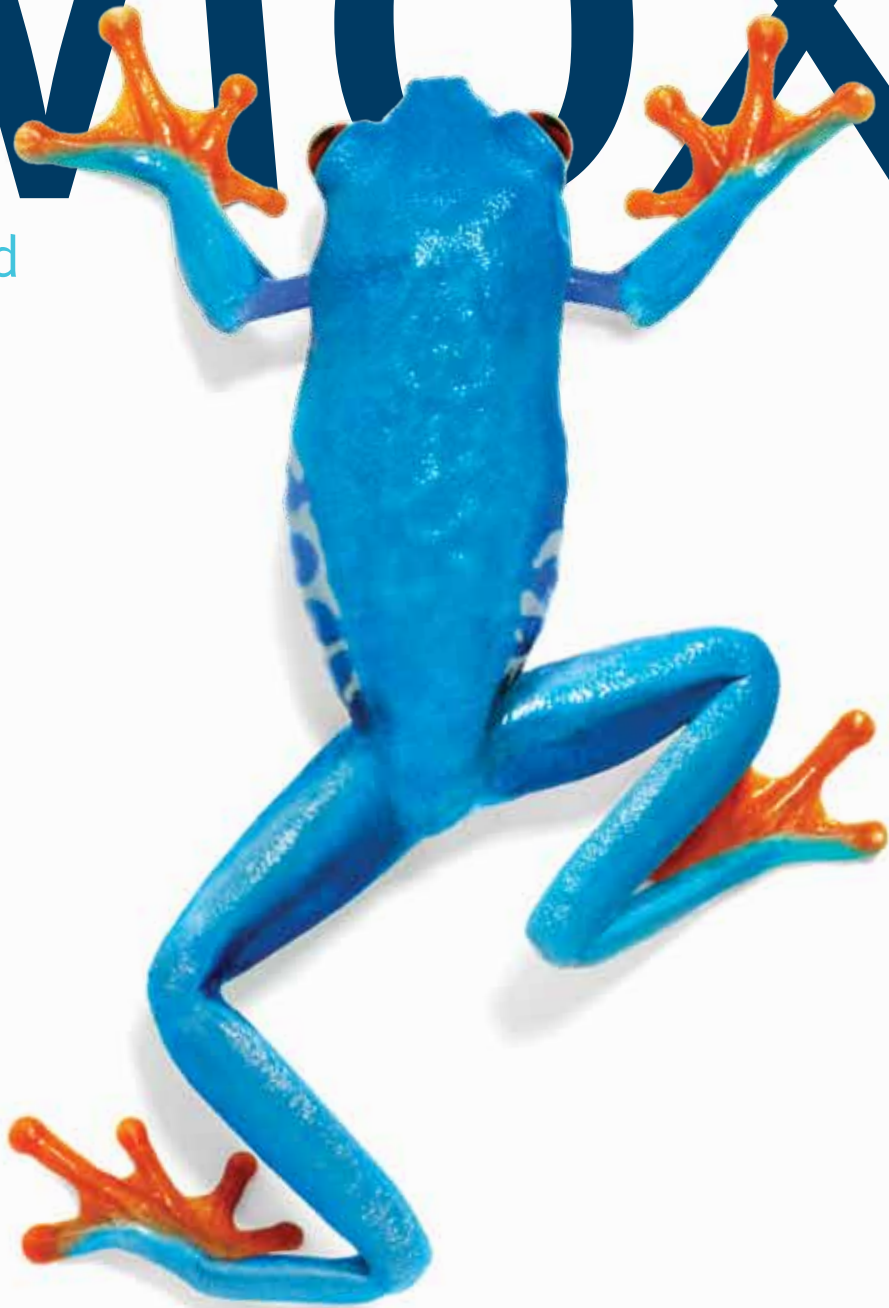


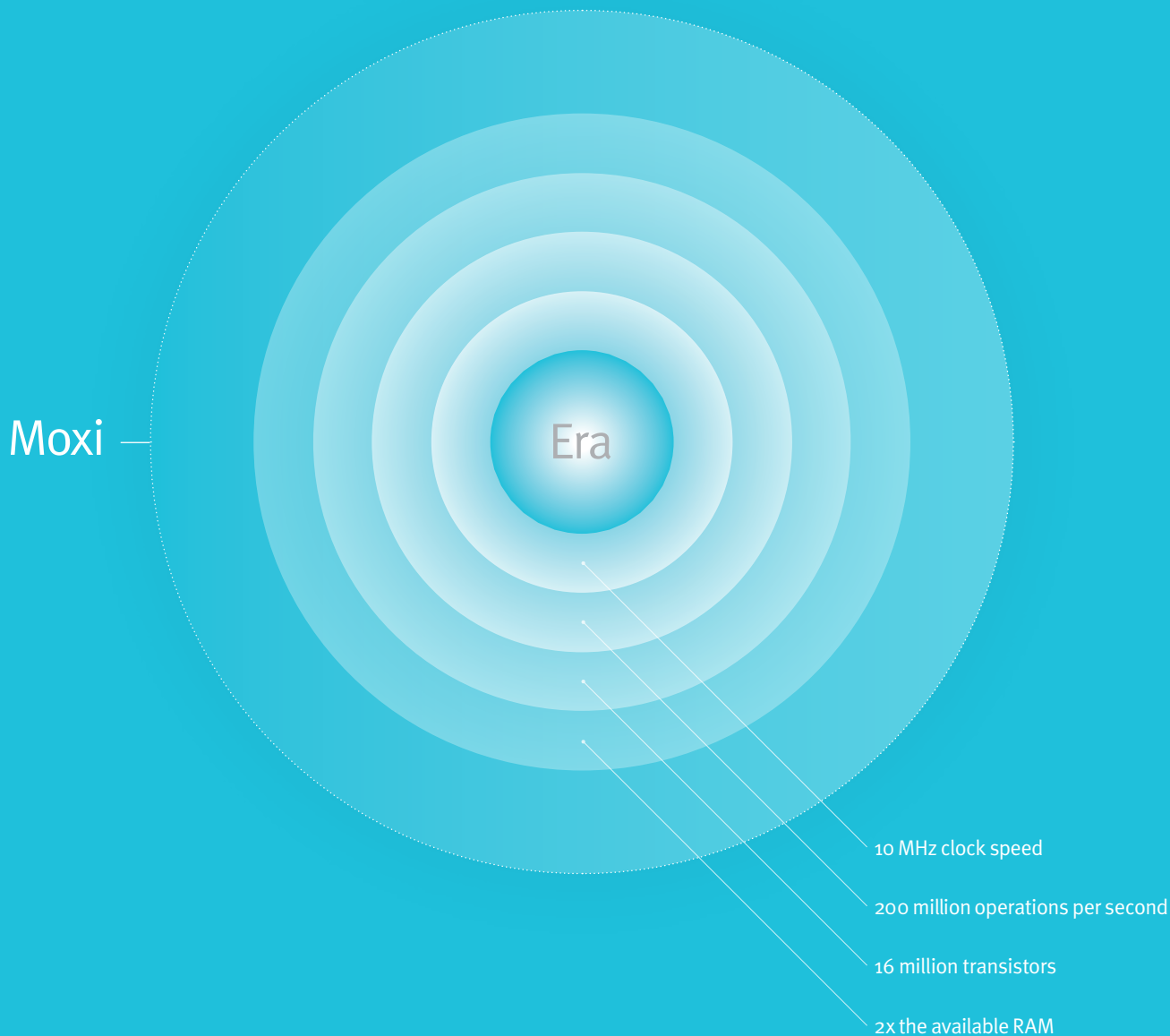
Moxi

Powered
by Era™



unitron™ Hearing matters

Open fit goes high-fidelity with Era



Moxi™ is powered by Era™, the incredible new sound processing platform that makes great things happen. Developed by Sonova and purpose-driven by Unitron, Era heralds great advancements in hearing instrument technology. Processing speed and memory increase dramatically, propelling more advanced algorithms, high-fidelity features and sophisticated wireless capabilities.

Accelerated by the Era platform, Moxi takes open-fit, canal receiver technology (CRT) performance to new heights. To deliver the highest fidelity sound, Moxi utilizes an open-fit strategy that combines three proprietary technologies:

- 1 Automatic Program with SmartFocus™
- 2 Natural Sound Balance
- 3 Pinna Effect

Integrating these core technologies into a targeted strategy gives Moxi wearers all the advantages of an open fit, taken to new levels of performance. For listening the way nature intended.

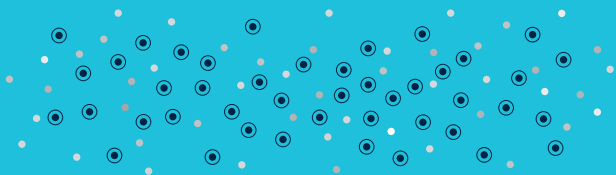




A new Era in automatic performance

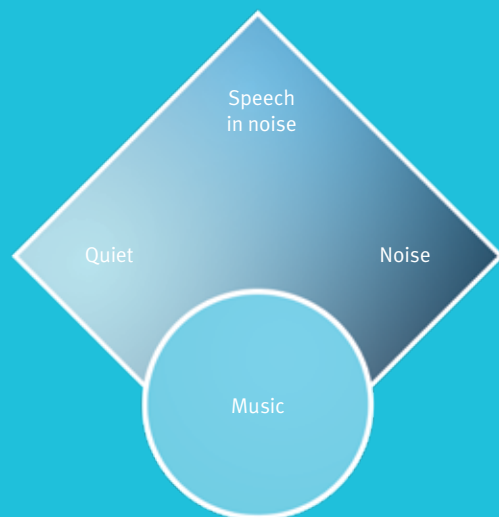
The Era platform infuses the Unitron Automatic Program with more speed, intuition, accuracy and simplicity. This responsive Automatic Program is central to Moxi's open-fit, high-fidelity hearing strategy.

High-resolution sensors continuously analyze listening environments, providing real-time information to the classifier, which – instead of switching between fixed parameter hearing environments – custom blends the hearing instruments' response. The Automatic Program is further enhanced by SmartFocus, always at work in the background synergistically combining adaptive features for optimal speech intelligibility or comfort as the situation demands. This innovative, blended automatic approach ushers in a new era of smooth, effortless transitions and a more natural listening experience.



Superior sensors, precision classification

Forty-six high-resolution sensors and more than 200 million operations per second provide virtually instant updates to the classifier and adaptive features. This combination ensures high-fidelity sound and effortless transitions in ever-changing sound environments.



Music gets high-fidelity treatment

When music is detected Moxi automatically transitions to a dedicated music program that provides superb music sound quality. MyMusic™ further enhances listening quality and pleasure by providing fitters with a choice of six frequency-specific music genres: at fitting, simply select your client's favorite music genre to personalize their listening experience.



Without SmartFocus:

Desired speech



On-target noise



Off-target noise



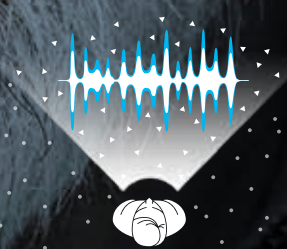
With SmartFocus:

SmartFocus
enhances speech



On-target noise
reduced relative
to speech

Off-target noise
reduced relative
to speech



Speech takes the spotlight

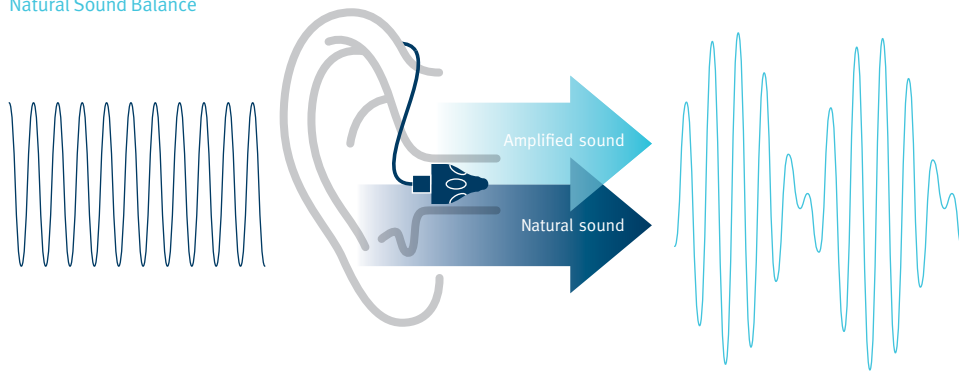
Optimized in Moxi for an open fit, SmartFocus goes beyond the benefits of directional microphones. This clinically proven technology acts as a speech spotlight that zooms in on voices to enhance speech intelligibility. Even in noisy situations – the

environment most people with hearing loss complain about – SmartFocus highlights speech, while unwanted noises fade comfortably into the background.

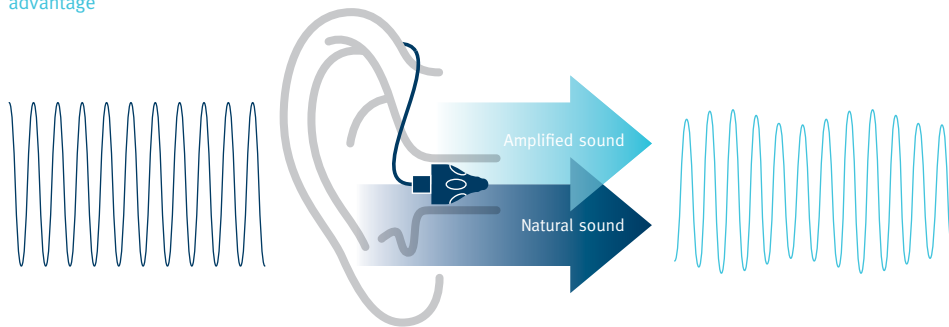
Natural Sound Balance answers open-fit challenge

Natural Sound Balance offers yet another reason to love open-fit hearing instruments. It addresses the open-fit challenge of artifacts that can occur when unamplified sounds enter the ear canal and combine with amplified sounds. An integral part of Moxi's open-fit strategy, Natural Sound Balance continuously monitors these sounds and makes precise adaptive adjustments to preserve one clear, balanced signal.

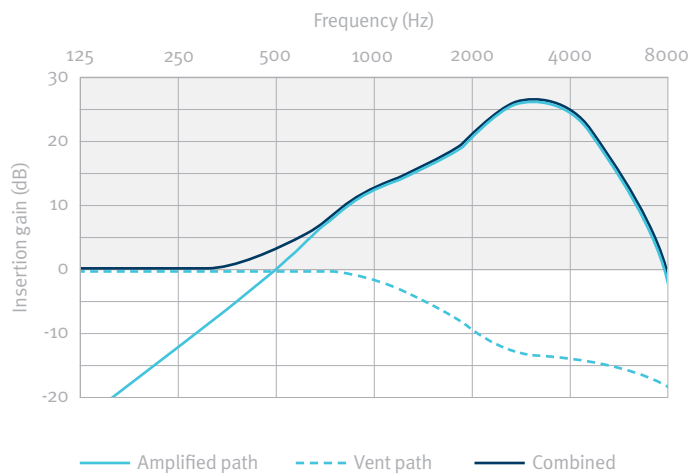
Without Natural Sound Balance



The Natural Sound Balance advantage



Natural Sound Balance frequency response



Source:
Dillon (2001): *Hearing Aids*

Pinna Effect recreates natural acoustics

The conventional location of microphones on behind-the-ear (BTE) hearing instruments doesn't replicate the natural directionality enjoyed by people with normal hearing. Pinna Effect is a key component of Moxi's open-fit strategy: it recreates the natural acoustics of the ear's pinna, providing a much more true-to-life directionality, particularly in the high frequencies.



Typical location of BTE micro-phones isn't ideally situated to provide natural acoustics



Pinna Effect recreates more natural directionality by compensating for the microphone location



The best phone solutions

Moxi clients enjoy the best array of phone solutions – easy, automatic and discreet.

Binaural Phone: audio signals are streamed from the phone ear to the opposite ear without a separate accessory, for clear, balanced phone conversations. Binaural Phone can be activated automatically with easy-t, via the Smart Control remote or the program toggle on either hearing instrument*

Telecoil: the preferred solution for using inductive phone and loop systems

uDirect™: the convenient optional accessory for hands-free use of cell phones and other wireless devices

Accessories

Smart Control remote: the only remote to allow real-time adjustments to comfort and clarity

uDirect™: full connectivity to wireless devices

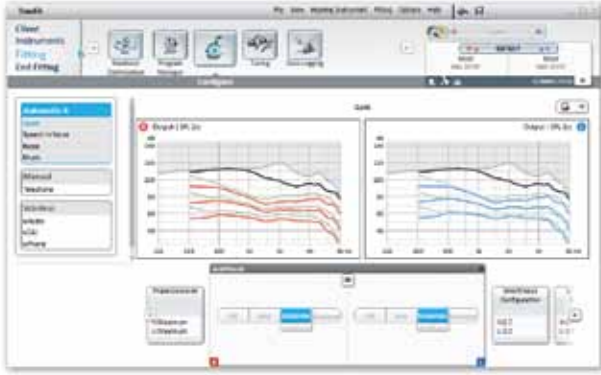
uTV™: wirelessly sends stereo TV audio directly to hearing instruments via uDirect



*Binaural Phone

Successful fittings. Simplified.

New TrueFit™ fitting software features clean, intuitive, and easy-to-navigate screens that put all the tools you need for a successful fit at your fingertips. It's new and it's amazing. And just as important, it's incredibly easy to learn.



Mini, mighty

Moxi's size belies its strength. We've paid extra attention to the little details that make a big difference in the face of everyday wear and tear:

- Robust shell withstands the rigors of everyday wear and use
- Coated receiver wires are soft and malleable, yet exceedingly durable
- Double wax protection for receivers

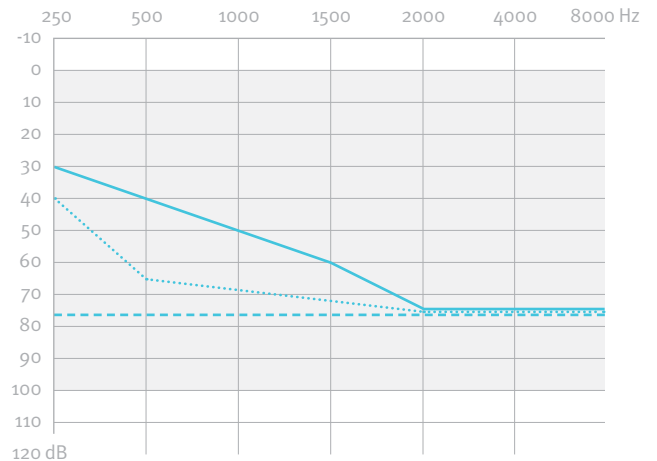


Ultimate fitting flexibility

A choice of three receivers satisfies mild to severe hearing losses.

Output / gain (2cc)	Standard receiver (112/45)	Power receiver (126/55)	Super power receiver (129/61)
Open dome	• ———	•	
Closed dome	• ·····	•	
Power dome	• - - - -	•	
Power shell	•	•	
cShell (Hard and soft options)	•	•	•

IntelliVent technology lends digital precision to Moxi's custom coupling vent selection.



Fitting range depends on the choice of receiver.





Moxi at a glance

Have your Moxi any way you like with 3 technology levels to choose from, all powered on the new Era wireless platform.

Performance profile	Moxi 20	Moxi 12	Moxi 6
Channels / bands	20	12	6
Standard receiver 112/45 (2cc)	•	•	•
Power receiver 126/55 (2cc)	•	•	•
Super power receiver 129/61 (2cc)	•	•	•

Open-fit strategy

Automatic with SmartFocus™	Automatic 4	Automatic 3	Automatic 2
Natural Sound Balance	•	•	•
Pinna Effect	•		

Signature features

Multiband adaptive directional microphone	•	•	•
Binaural Phone	•	•	
Self learning	•	•	
LearnNow™	•		
Easy-t/telecoil	•	•	•
AntiShock™	•	•	•

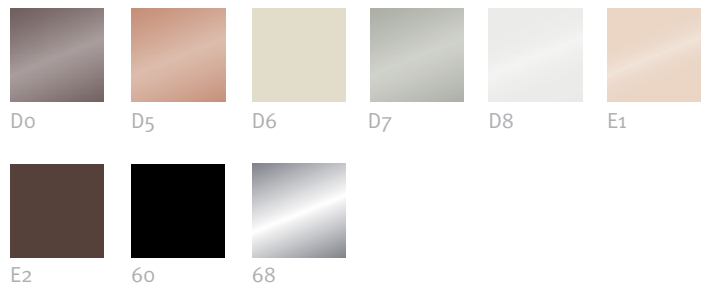
Accessories

Smart Control remote	•	•	•
uDirect™ (3 wireless streaming programs)	•	•	•
uTV™	•	•	•

In every Moxi:

- Up to 3 manual programs
- Feedback management system
- Data logging
- Wind noise manager
- DuoLink (binaural synchronization)
- Wireless programming with iCube
- WDRC and linear
- IntelliVent technology for custom coupling options

Available in these colors:



At Unitron, we care deeply about people with hearing loss. We work closely with hearing healthcare professionals to make advanced, purpose-driven solutions available to everyone. Because hearing matters.